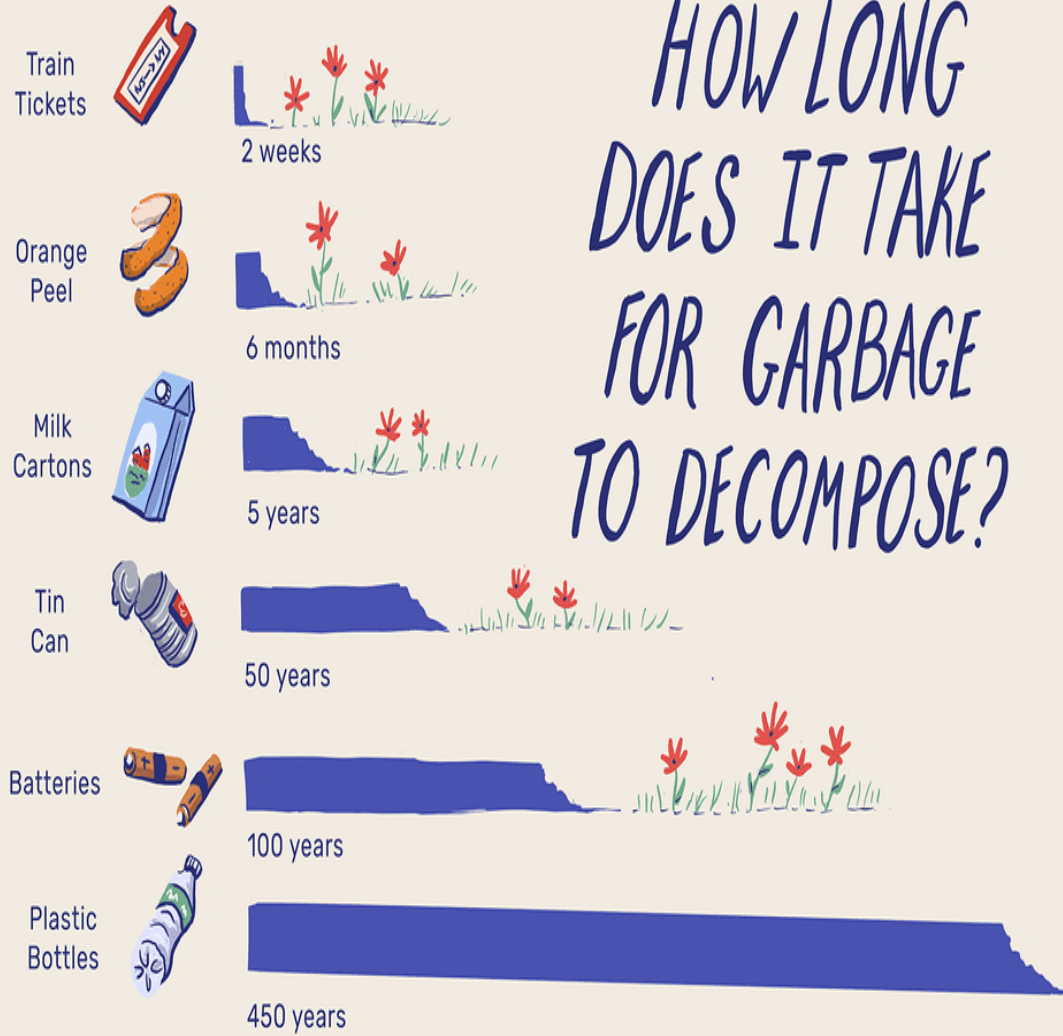


Great Pacific Garbage Patch

- Location: California and Hawaii.
- 1.6 million km²
- 94% microplastics
- 35% microfibers



HOW LONG DOES IT TAKE FOR GARBAGE TO DECOMPOSE?



Soda Bottle

Polyethylene terephthalate (PET)



450-1,000 years

Plastic Grocery Bag

High-Density Polyethylene (HDPE)



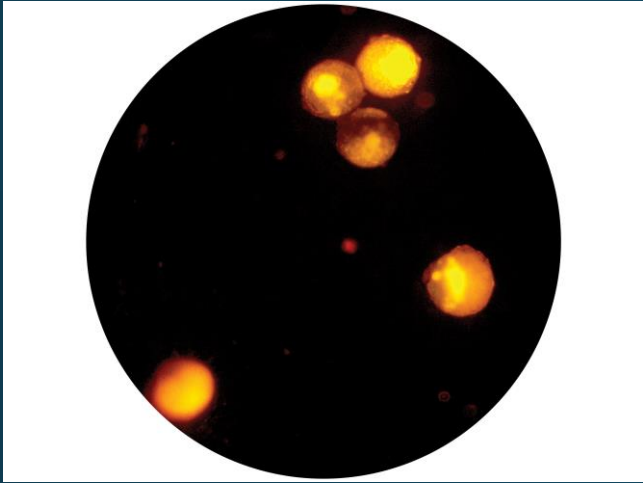
10-100 years

Detergent Bottle

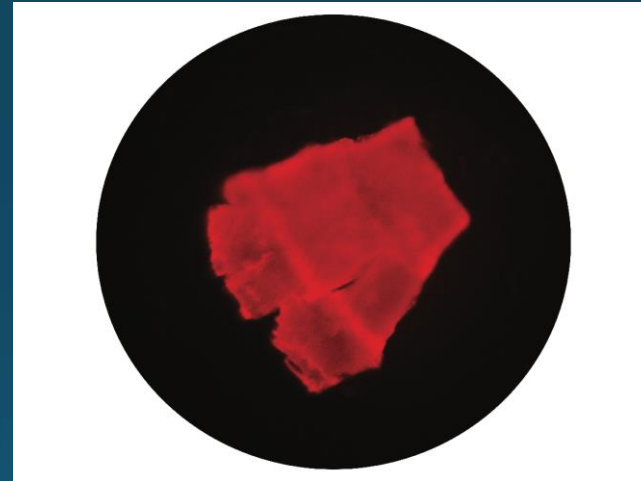
High-Density Polyethylene (HDPE)



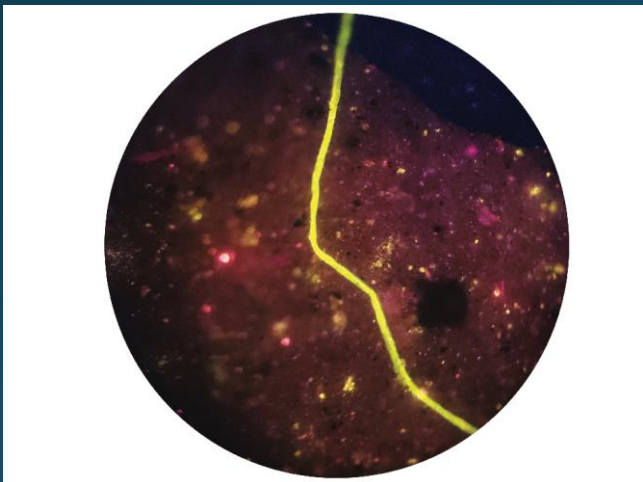
500-1,000 years



Beads 0.2 mm

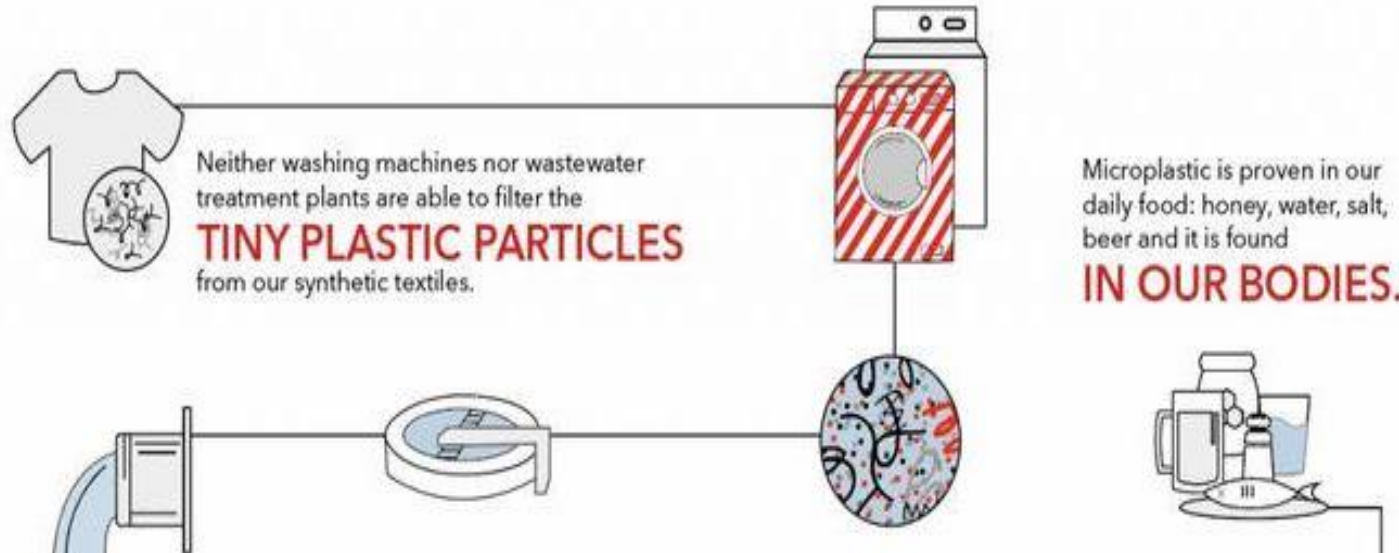


Fragment 0.3 mm



Fiber 2 mm

Schematic showing how microfibers enter the aquatic environment and into the food chain. From: www.guppyfriend.com



Neither washing machines nor wastewater treatment plants are able to filter the **TINY PLASTIC PARTICLES** from our synthetic textiles.

Microplastic is proven in our daily food: honey, water, salt, beer and it is found **IN OUR BODIES.**



Once in the environment, microfibers degrade into smaller pieces and are irreversible. They concentrate pervasive **BACTERIA AND POLLUTANTS.**

The microplastic particles are consumed by aquatic organisms and ultimately work their way up **THE FOOD CHAIN.**



A city with 100,000 citizens releases a wash-related volume of microfibers equivalent to approx. **15,000 PLASTIC BAGS** every single day.

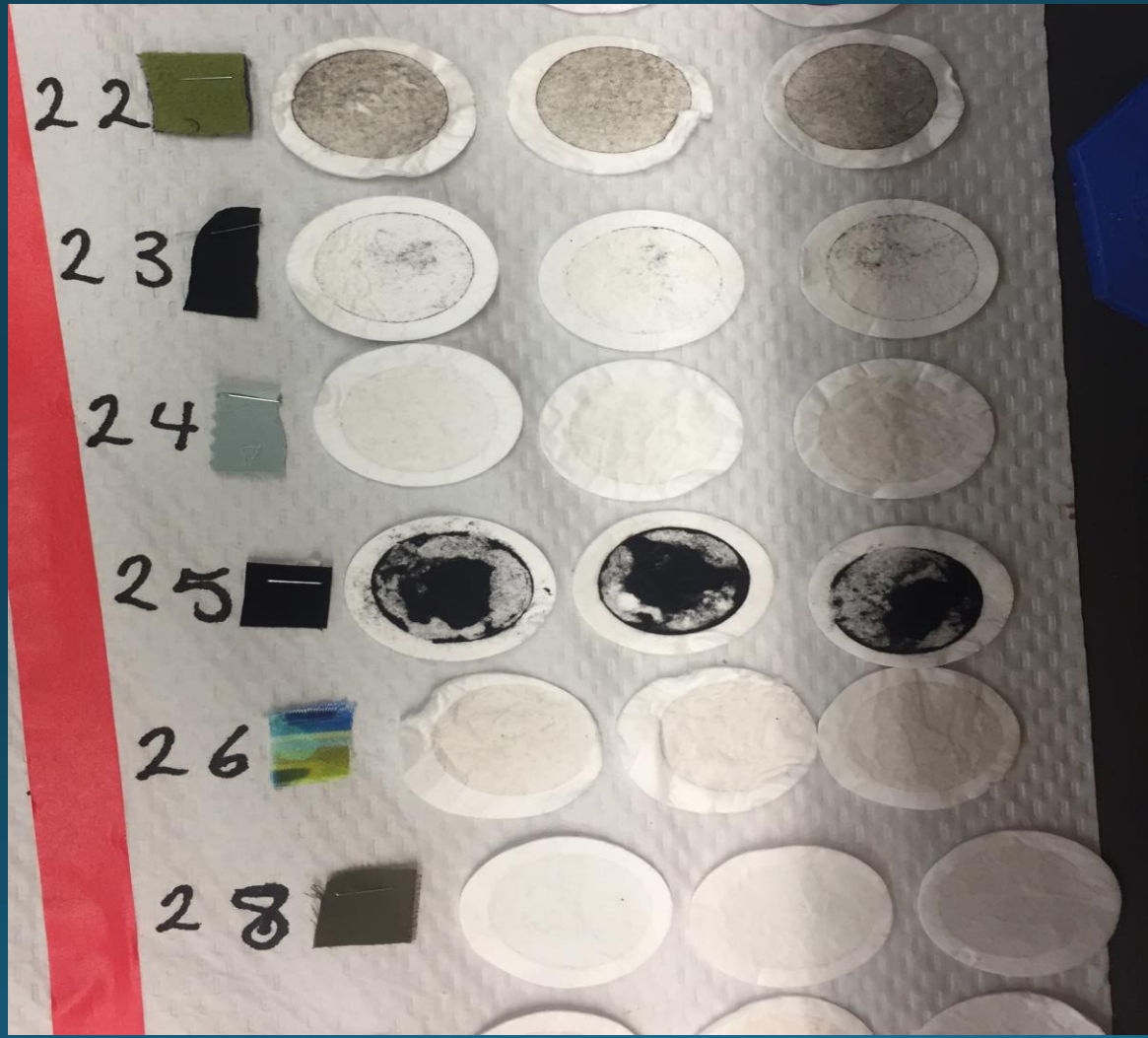


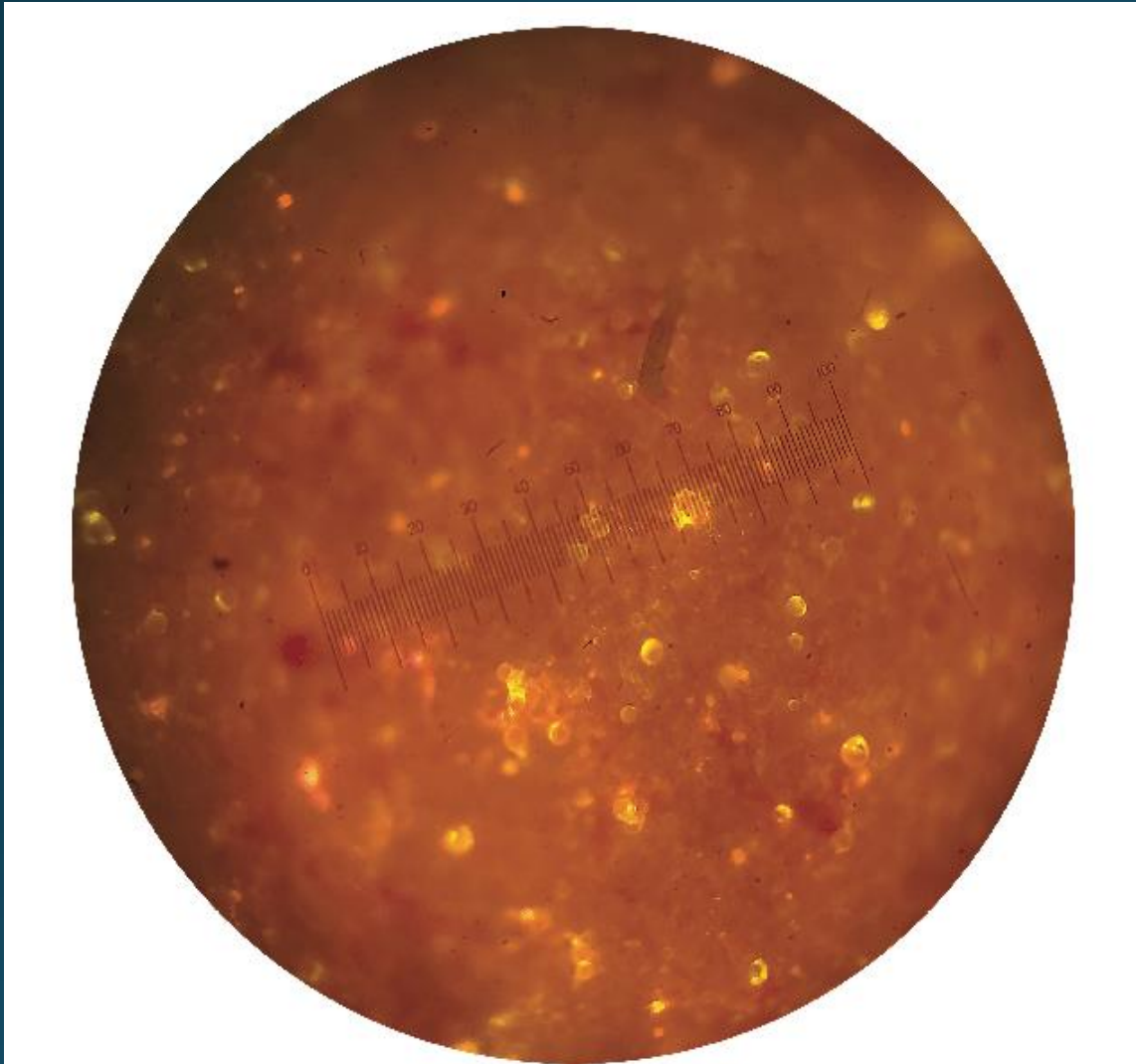
Microplastic particles are found **IN COUNTLESS SPECIES** - including plankton, a cornerstone of the marine ecosystem.

STOP!
MICRO
WASTE

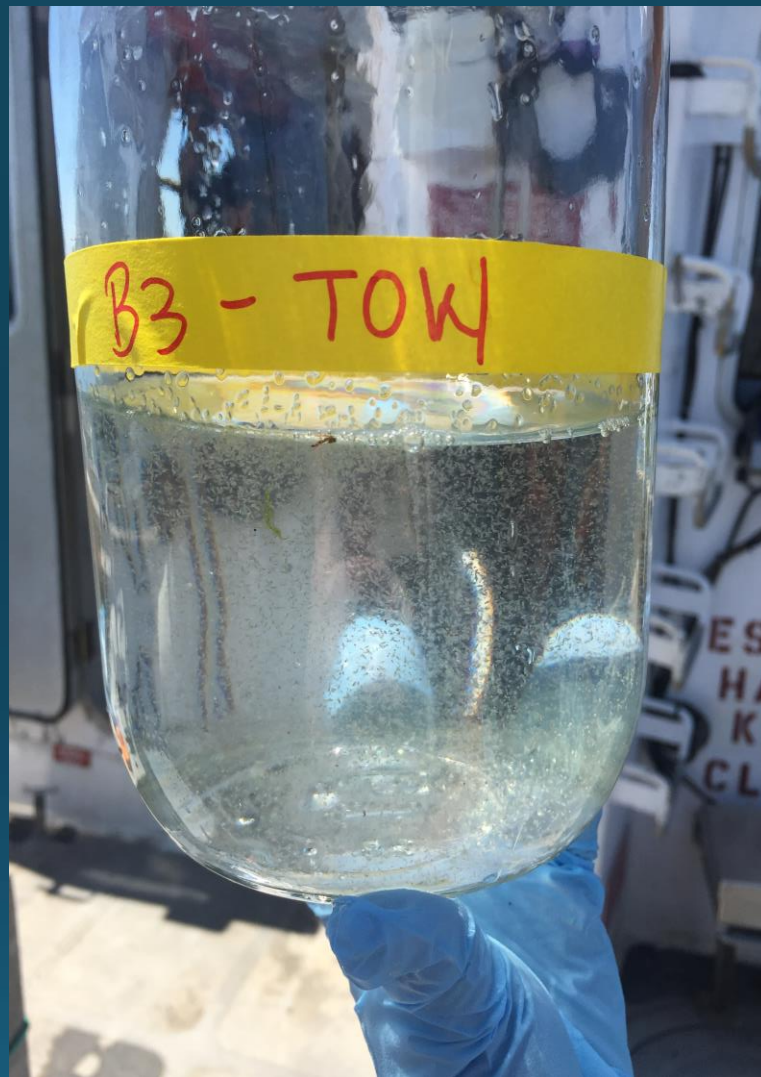
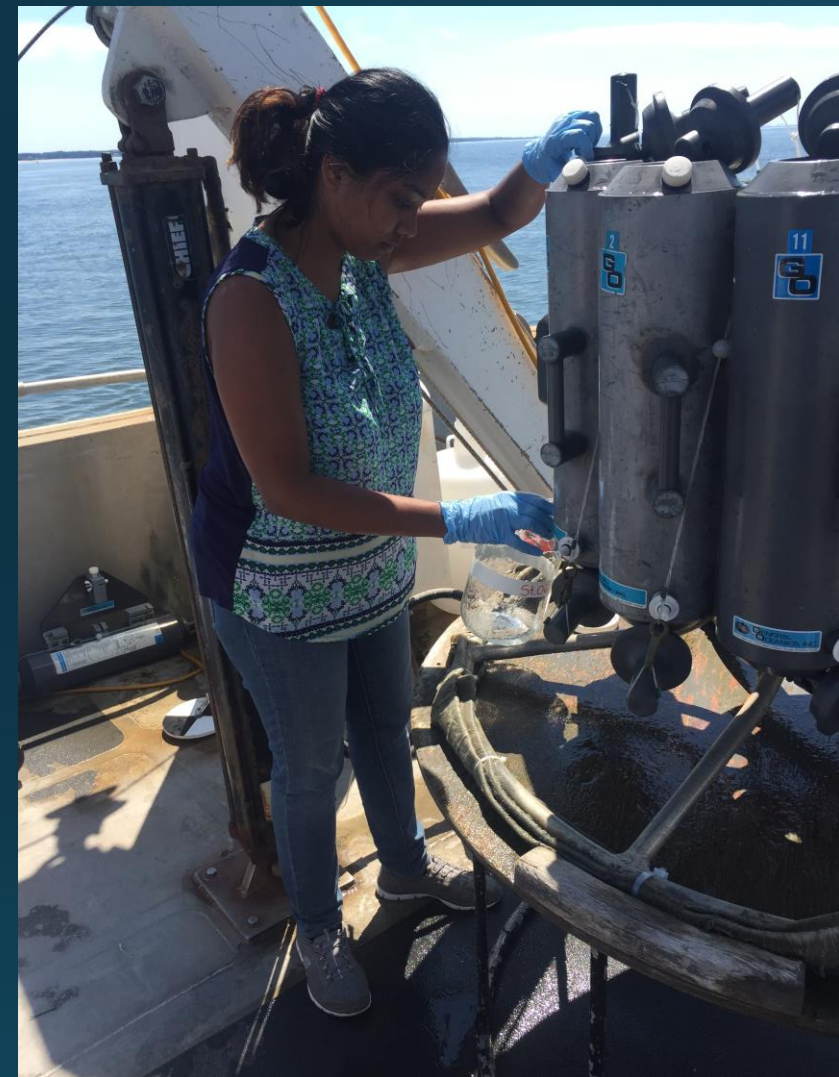
TEXTILE SAMPLES

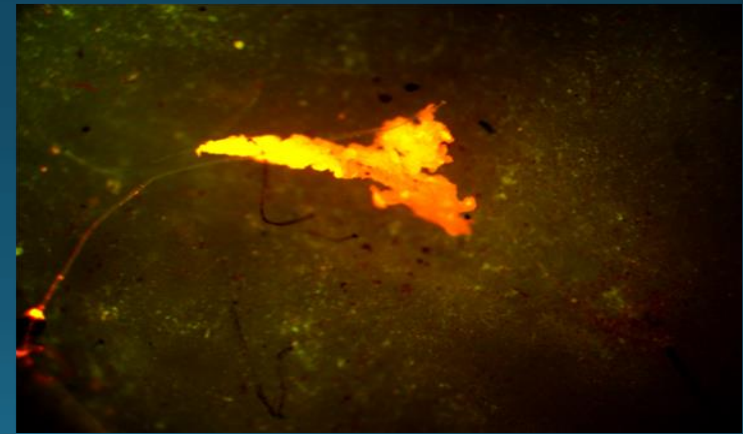






Beads in
detergent
only
image
100X





**MICROPLASTIC PARTICLES IN SHRIMP
UNCOMMON CHARTER SCHOOLS, BROOKLYN**

Individuals should use eco friendly products such as the Guppy Friend and Cora Ball. These products when placed in the washer prevent as well as collect shed fibers

